

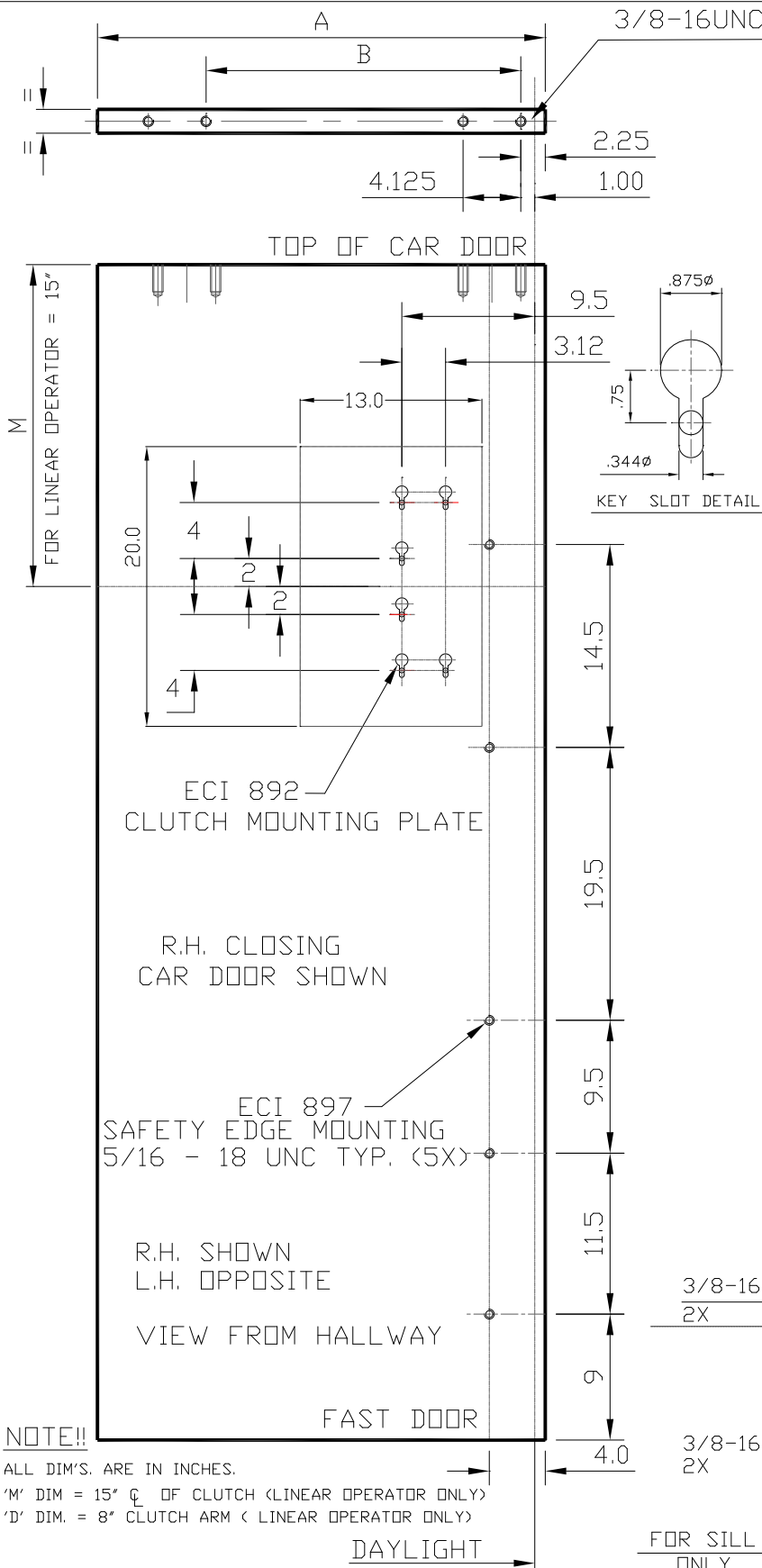


TWO SPEED CAR DOOR DETAILS ELEVATOR COMPONENTS IND. INC.

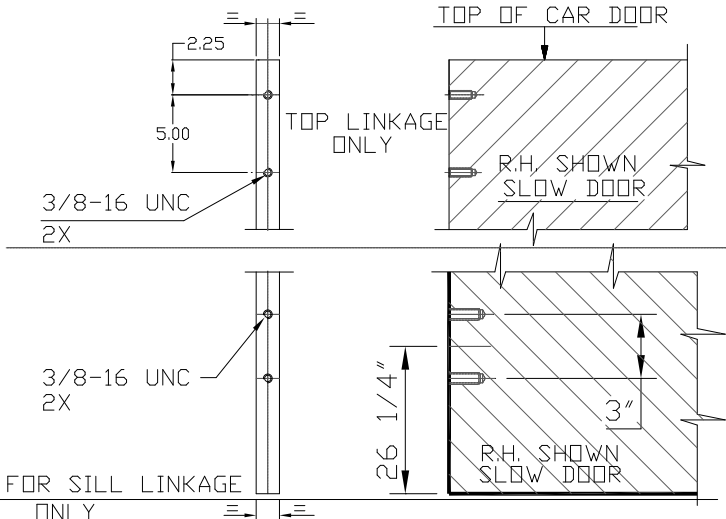
FC

1237 KAMATO RD. MISSISSAUGA, ONT. L4W 2M2
PHONE: (905) 624-6565 FAX: (905) 624-4262

DATE: JUNE, 2008.



DOOR WEIGHT	DOOR OPENING	TWO SPEED		
		A	B	M
51	30	16.12	8.50	15
52	31	16.62	8.50	
53	32	17.12	8.50	
54	33	17.62	10.50	
55	34	18.12	10.50	
56	35	18.62	10.50	
57	36	19.12	10.50	
58	37	19.62	12.50	
59	38	20.12	12.50	
60	39	20.62	12.50	
61	40	21.12	12.50	19
62	41	21.62	14.50	
63	42	22.12	14.50	
64	43	22.62	14.50	
65	44	23.12	14.50	
66	45	23.62	16.50	23
67	46	24.12	16.50	
68	47	24.62	16.50	
69	48	25.12	16.50	
70	49	25.62	16.50	
71	50	26.12	16.50	
72	51	26.62	16.50	
73	52	27.12	16.50	
74	53	27.62	18.50	27
75	54	28.12	18.50	
76	55	28.62	18.50	
77	56	29.12	18.50	
78	57	29.62	20.50	
79	58	30.12	20.50	
80	59	30.62	20.50	
81	60	31.12	20.50	



NOTE!!
ALL DIM'S. ARE IN INCHES.
'M' DIM = 15" CL OF CLUTCH (LINEAR OPERATOR ONLY)
'D' DIM. = 8" CLUTCH ARM (LINEAR OPERATOR ONLY)
DAYLIGHT